

E2 – 8.448 MBPS Fiber Optic Modem

FO 80E2**E2 HIGH PERFORMANCE FIBER MODEM****Characteristics
Benefits**

- E2 : G703 – 8.448 MBPS
- BNC and RJ45 sockets
- Choice of single mode and multi mode interface
- Multi mode diode : 4 km
- Single mode diode : 30 km
- Single mode laser : 60 or 117 km
- Optics: ST type II connectors
- Easy to operate : VT100 intuitive menus.
- Rich operation and maintenance management
- Choice of packaging and power supply
- AMS chassis with SNMP management
- Industrial design

FO-80E2 is a fiber optic modem aimed at interconnecting E2, G703 at 8.448 MBPS network and equipment.

FO-80E2 is addressing the telecommunication applications and especially the microwave interconnection at 8 MBPS.

FO-80E2 comes either in an industrial desktop enclosure, or as a card that fits into the AMS range of chassis for 19" bay integration. The desktop version may receive a choice of power supply that can connect to the mains or a DC source.

FO-80E2 has a complete set of fiber optic option, being multi mode diode, single mode diode or laser, providing budget from 4 km up to 117 km. It fits best any application requirement for an optimal cost.

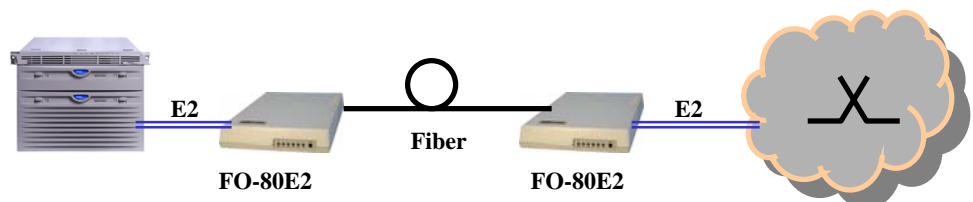


FO-80E2 is managed from its console port that provides intuitive menus and rich diagnostic for controlling the transmission performance. It can be part of a network management system in the AMS16 chassis and the SNMP controller card.

FO-80E2 is part of the FO-8000 fiber optic range of modem, that offers most data terminal interfaces such as RS232, X21, V35, RS530, 10BaseT, E1, 4xE1, and four ISDN BRI interfaces.

INTERCONNECTION OF E2 EQUIPMENT

Depot of a 8 MBPS network or microwave link

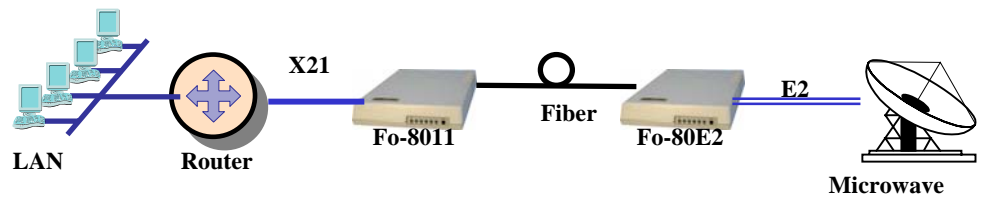


FO-80E2 extends an E2 link from a PDH/SDH network or from a microwave unit to the data processing facility. E2 / G703 link is limited in length while **FO-80E2** provides a highly reliable link that is immune to electromagnetic disturbance over a long distance.

FO-80E2 offers a choice of options for better integration at the microwave interface point, such as different packaging and power supply models.

Fiber Optic Modem
For E2 – 8.448 Mbps G703
Interconnection

FO-80E2 : MICROWAVE INTERFACE



FO-80E2 is well suited for microwave link applications where an E2 interface must be transported and converted into legacy RS-530 / V35 / X21 interface that can connect to any data terminal unit such as router, bridge or data processing unit. The microwave unit may be located far from the data terminal unit thanks to a choice of fiber optic models.

FO-80E2 may work in pair with an FO-8011 modem that provides a legacy data interface – RS530, V35 or X21. This offers an easy and direct connection to any data terminal unit such as a router, bridge, data processing unit, video codec, etc.

SPECIFICATIONS

Fiber Optic Interface

- Connector : ST – accessories for FC / SC
- M8T model : multi mode, 820 nm, budget 15 dB, reach 4 km
- SLT model : single mode, 1310 nm, 14 dB budget, reach 30 km
- Z3T model : single mode laser, 1310 nm, 23 dB budget, reach 60 km
- Z5T : single mode laser, 1550 nm, 29 dB budget, reach 117 km

E2 Interface

- Connectors : RJ45 symmetric and BNC unbalanced
- G703, 8.448 Mbps, clear channel
- Line coding : HDB3
- Receiver sensitivity : short haul
- Clocking : internal, from E2 interface, recovery from remote modem, co-directional

Vxx Interface

- Models : RS530, V35, X21
- Connector : DB25, RS530 like

General

- Size : 196 x 120 x 44mm
- Weight : 1 kg
- Operating temperature : 0 to 45 °C
- Designed to comply with : EN 60950, EN 55022, EN 55024

Power Supply

- Mains 110-230 Vac, 50-60 Hz, IEC socket
- DC : 48 Vdc or 24/36V as an option

Management

- Local console port : AT commands, intuitive VT100 menus. RJ45 socket and DB9 cable.
- 24 hour statistics counters for line events, frame errors, and log of the last 40 critical events.
- Flash memory for further firmware enhancement

ORDERING INFORMATION

FO-80AA – XX T Y Z

M8	XX : fiber optic version	AA : data terminal interface
SL	820 nm Multi mode, 4 km reach	E2, G703, 8.448 Mbps
Z3	1310 nm single mode diode, 30 km reach	11/30/35 X21 / RS530 / V35 – DB25 connector
Z5	1310 single mode laser, 60 km reach	
	1550 single mode laser, 117 km reach	
		YY : power supply and package
		I Stand alone with 110-230 Vdc mains
		C Stand alone with 48 Vdc converter
		R Rack mount card for AMS4/16 chassis
	Z : Country	
	E = Europe	U = USA

The information contained in this document are provided without warranty and are not contractual. In order to improve his products, CXR reserves his rights to modify his products without notice.



Rue de l'Ornette
28410 Abondant
France