

High Speed LAN Bridge

SERIALAN@

MULTIPLE PROTOCOL, HIGH SPEED 10/100BASE TX ETHERNET BRIDGE

Characteristics

- **SerialLAN**
compact metallic enclosure
- Multi protocol WAN interface : RS530, V35, X21, RS232, V36—Synchronous
- Socket : standard RS530 DB25 Mâle
- Transparent Ethernet bridge : 802.1D 10/100 Base TX
- Filtering bridge with automatic discovery of MAC addresses
- Data compression
- Transparent to VLAN and special protocols frames
- Data rate up to 8 MBPS
- Manageable from the LAN or from the console port
- Administration : Telnet, HTTP and SNMP (*)

Advantages

- Compact, cost effective
- Fast and easy installation : plug and play.
- High speed : 8 MBPS
- Pingable unit.
- Transmission statistics
- Industrial kit for DIN rail mounting



CXR Anderson Jacobson
Rue de l'Ormette
28410 Abondant - France

T +33 (0) 237 62 87 90
F +33 (0) 237 62 88 01
email: contact@cxr.com

www.cxr.com

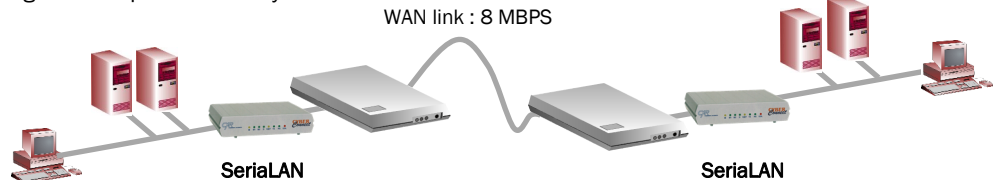
Smart Solutions for Smart Networks

ETHERNET LAN OVER A WAN LINK

SerialLAN is a new Ethernet bridge over a WAN interface. This interface is software configurable and supports most WAN protocols such as RS530, X21, V35, RS232.

SerialLAN is a compact and cost effective solution to transparently carry Ethernet frames over a WAN link. It relies on up-to-date and powerful internet processors and provides a high speed bridging features at up to 8 MBPS and data compression up to 256 KBPS.

SerialLAN provides a plug and play solution for interconnecting LAN's. It provides a very fast



SerialLAN is transparent to the Ethernet frames, even the 802.1q VLAN or special protocol frames. It carries Ethernet frames from a LAN to another through a synchronous WAN link. It is a convenient bridge for VLAN based network interconnection.

SerialLAN is a powerful 10/100 Base TX Ethernet bridge. It can run at rates up to 8 MBPS and can optimize the traffic thanks to its filter-



ing capabilities. Data compression also provide bandwidth optimization for rates up to 256 KBPS.

SerialLAN's operation is automatic since it derives the clocks from the WAN modems.

SerialLAN is highly manageable. Both local and remote units can always be controlled from their console port, from the LAN, or from the WAN.

TECHNICAL SPECIFICATIONS

LAN interface

- Ethernet 10/100 Base TX : auto sense
- Socket : RJ45
- IEEE 802-3 compliant
- Transparent to IEEE 802.1q VLAN frames
- Filtering of up to 10,000 MAC addresses
- Frame buffer : 400

WAN interface

- Socket : DB25, pin assignment as RS530
- Protocols : RS530, V35, X21, RS232
- Clock : DTE, RCK and TCK as input
- Rate : up to 8 MBPS
- Data compression : up to 256 KBPS

Management

- Console port : V24/V28 - 8 bits no parity, 19.2 Kbps; VT100 emulation, AT commands and user friendly menus.
- From the LAN : Telnet session, user friendly menus, http browser (*)

- Remotely from the WAN interface : Telnet, user friendly menus, http browser (*)
- Remote control does not interrupt the user traffic. The remote unit can be controlled from a host anywhere or from the local unit.
- Flash memories for code upgrades from the console port or and FTP session
- Plug and play

SerialLAN Front panel

- LED: Power, CD, LAN 10/100, RX, TX and link

Power supply

- 110 / 230 Vac through external mains adapter

Physical

- Metallic enclosure: D x W x H
14,7 cm x 14,4 cm x 3 cm

Operating Temperature

- 0 to 45 °C
MTBF : 150.000 h

(*) Ask CXR for details

Specifications are subject to change without notice