



CXRView Plus

Element Management Systems

Features

All CXRView

- GUI (Graphical User Interface)
- Runs on PC/Windows 2003/XP/2000 operating system
- Multiple levels of login security
- Fully supports all SNMP v1 functions including commands, alarms, and statistics gathering
- Allows viewing and printing of all node statistics and alarm report
- Single and multiple graphic windows presentation of devices, statistics, and map
- Scalable to 1,000 network elements
- Groups network elements into hierarchy
- Manual or auto-detect of network elements
- Multiple color display of alarm severity level (loss of power results in an alarm)

CXRView Plus

- Client /Server architecture
- Configuration file upload and download
- Firmware file download for all plug-in cards
- Network Topology map with link between NEs (Trunk Management)
- Port /Node associated comment/remark (Comment associated with device/port)
- Customer Management
- SNMP port number user changeable
- Alarm trap port number user changeable
- User login logout history
- Node Connection status and statistics

Description

CXRView Plus, Element Network Management Systems, is a software product that provides a GUI (graphical user interface) for the management of a communications network containing CXR Mux products for addition of a database management.

CXRView plus runs on PC/Windows 2003/XP/2000 using a low-cost and popular platform which are scalable to 1,000 network elements.

The workforce management is facilitated by the multiple levels of login security, which provides the network manager great flexibility of work assignment. The hierarchical grouping feature-cities, buildings, and rooms-allow rapid access to the desired network element. Automatic detection of network elements and automatic creation of the network map facilities the installation procedure. CXRView Plus covers all the functions of CXRView and addition of configuration file upload and download, firmware file download for all plug-in cards, and more advanced management functions.

All SNMP v1 and v2 functions are available in CXRView Plus. This includes the execution of all commands, the gathering of all statistics, and the display of all alarm conditions in real time.

The map and the reports can be printed as well as viewed directly.

Ordering Information

To order specify:

Model	Description
CXRView	CXRView Basic
CXRView-ENT	CXRView Basic, unlimited licence
CXRView-Plus	CXRView Plus Advanced
M-CXRView-Plus	CXRView Plus Advanced 1 year maintenance

Note:

- **Castle Rock** is the trade mark of Castle Rock Computing.
- **Use MySQL database to support CXRView Plus**

CXRView Plus Specifications

System Requirements

CPU	Pentium III 1GHz
Memory	1 GB
Disk Free	10 GB
Screen	800 x 600 or Above
Mouse Required	Yes
Server/Poller Operating System	Win XP/2K/2K3/NT Will also run under WIN ME and 98 if not using the JAVA console.
Console Operating System	Win XP/2003/2000

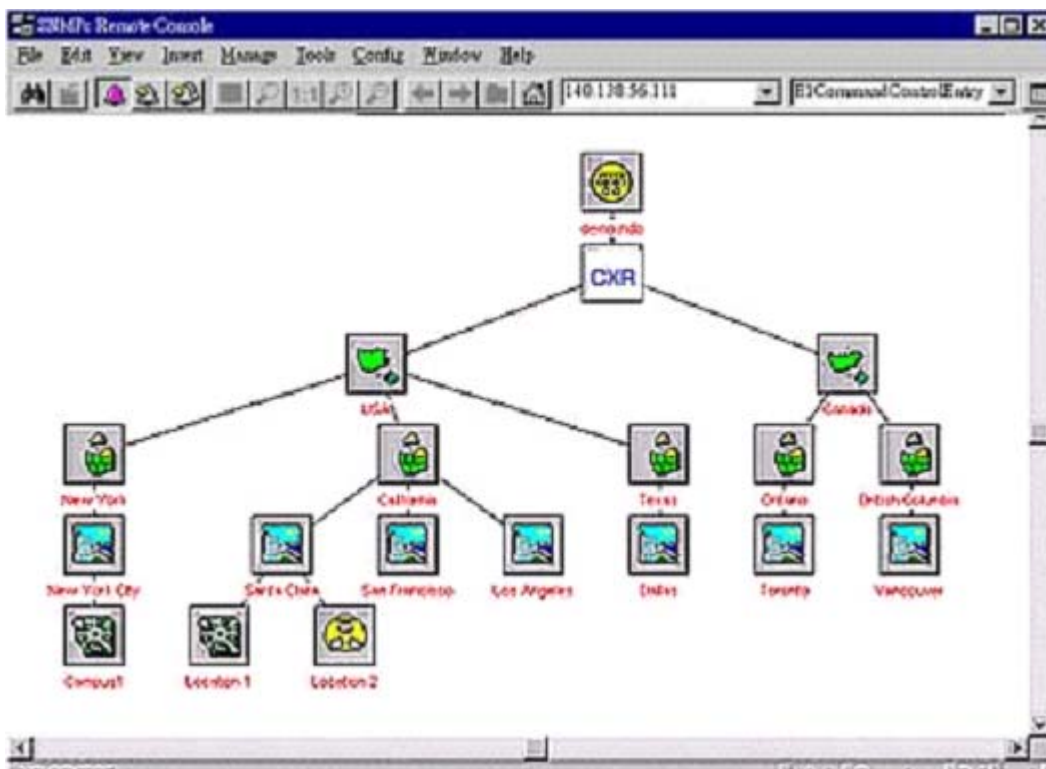
Maximum devices 25,000 manageable devices

Login Security 3 levels - (1) Read only,
(2) Network element commands,
(3) Supervisor for Configuration and User Administration

Map creation Automatic or manual node detection, automatic or manual map creation

SNMP support Community strings, custom polling, MIB browsing

Displays Multiple views of map, log files, alarms, and device display



Displays of events in 6 levels of severity in multiple colors



Rue de l'Ornette
28410 Abondant
France

Tél. : +33 2.37.62.87.90
Fax : +33 2.37.62.88.01
Email: trans@cxr.fr